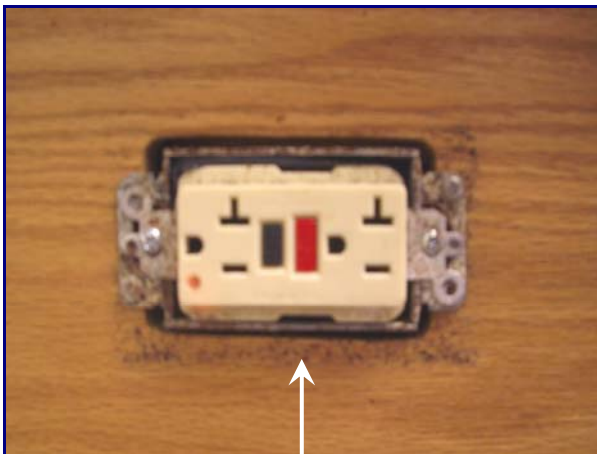


Pest Vulnerable Areas and what to be on the Look Out for.



American Cockroach with droppings (enlarged) **German Cockroaches** with droppings (enlarged)



German cockroach fecal smears around an electrical outlet.

INSIDE THIS ISSUE

- 1 Pest Vulnerable Areas
- 2 PVA Reduction Strategies



Few bugs are bad! More than 95% of all insect species are beneficial to humans.

Effective pest control

Effective pest control in a school takes cooperation from not only the pest control technician, but the school faculty and staff as well. You folks are the residents of the school, so you know when and where there are pests.

When the School IPM (Integrated Pest Management) team visits a school to assess the pest situation, we discuss pest problem areas with the school staff and then visit certain areas that commonly present pest problems. In this issue of Pest Press, we will discuss many of these pest vulnerable areas (PVAs) in the school.

The pests we generally see include cockroaches, mice, spiders, ants, silverfish, and occasionally crickets. These pests are animals and they like the same things we do, food, water, harborage and safety. Places that provide these necessities are the pest vulnerable areas we seek.

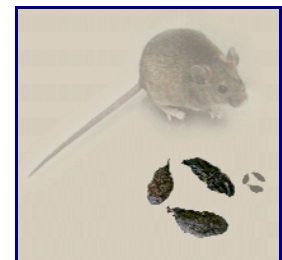
Some of the PVAs we visit include:

- | | |
|---------------------|--------------------------|
| kitchen & cafeteria | art centers |
| faculty lounge | science classrooms |
| custodial storage | special needs classrooms |
| locker rooms | kindergarten classroom |

What we do when we see evidence of pests

Many school pests, like cockroaches and mice, are nocturnal so you don't often see them in the day. What you do see is evidence of the pest.

You will often see coffee ground like droppings which is evidence of German cockroaches, pencil lead sized droppings, which would indicate a peridomestic cockroach like an American or Australian, or slightly larger droppings with tapered ends which would be mouse droppings. Yes, we look that closely! These droppings help us to identify what types of pests inhabit an area and they let us know where we should monitor.



House Mouse with droppings (enlarged)

After we have identified problem areas, we place our

monitoring stations. These stations are our 24 hour eyes. The stations are small square boxes that have openings for pests to enter and have sticky glue on the inside to trap the pest. There is a small piece of wood glued to the top inside of the box that is impregnated with a chemical that attracts cockroaches, but many types of pests may be trapped.

Once the traps are out, they are periodically checked to see what has been caught. The position of the pest in the trap indicates what direction it was traveling when it was caught.



Monitoring Station
showing German cockroaches

We also look to see if what we caught were immature insects or adults. The condition of the pest will tell us if it was healthy when it was caught or if some other pest has been nibbling on it for a food source.

Once we have gathered all this information, we can pinpoint where the pests are living and look closely for reasons the pests are living there. A decision is then made as to whether we can reduce the likeability of that area to the pest by sanitation or exclusion or, if we should make an insecticidal bait placement.

How do you minimize pests in PVAs?

- Reduce pest entry
 - Repair cracks, holes, and gaps
- Reduce food sources
 - Store food in sealable containers
 - Clean, clean, clean
- Reduce harborage
 - Eliminate clutter and cardboard

IPM EduQuestion:

**This is Alabama! We have bugs.
How bad is it to have pests such as
cockroaches in the school?**

Answer:

Where there are cockroaches, there is poop. Cockroach droppings, or frass, contain allergens.

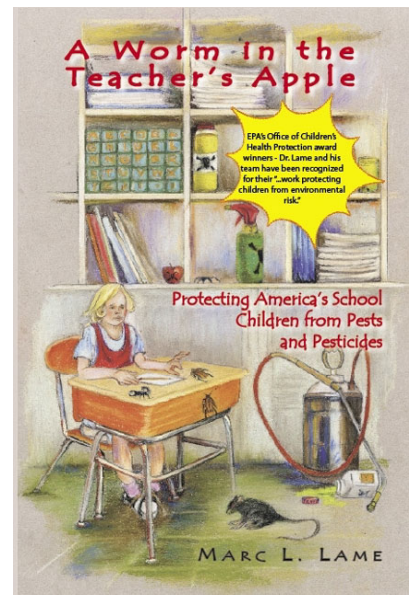
These types of insect allergens have been proven to trigger asthma attacks in children. The allergens are a protein that is in the frass and exoskeleton of the cockroach. Once the allergen is in the environment, it is difficult to remove.

When cleaning an area previously inhabited by cockroaches, be sure to wipe the area with a cleaner and then provide a clean water rinse of the area. If you skip the rinse, the allergen will not be spread to other areas, but will not be removed.

Read all About it!

Interested in learning more about the School IPM process? Want to know what all the fuss is about?

There is a great book out that outlines what School IPM is all about. "A Worm in the Teacher's Apple: Protecting America's School Children from Pests and Pesticides" by Dr. Marc Lame is a must read for anyone interested in why School IPM should be a priority for the safety of the children.



Suggested Reading

For more information on this book please [CLICK HERE](#).

Information for this issue of pest press has been prepared by department editors Rebecca Baldwin and Dr Faith Oi of University of Florida Entomology and Nematology, and edited for Alabama by Jerri Caldwell, Auburn Alabama.

For further information about Alabama's IPM program, Please contact:
Dr. L.C. "Fudd" Graham
(334) 844-2563
fgraham@acesag.auburn.edu

