

Ag Water Management via the Web: The Georgia Farmer Portal[©]

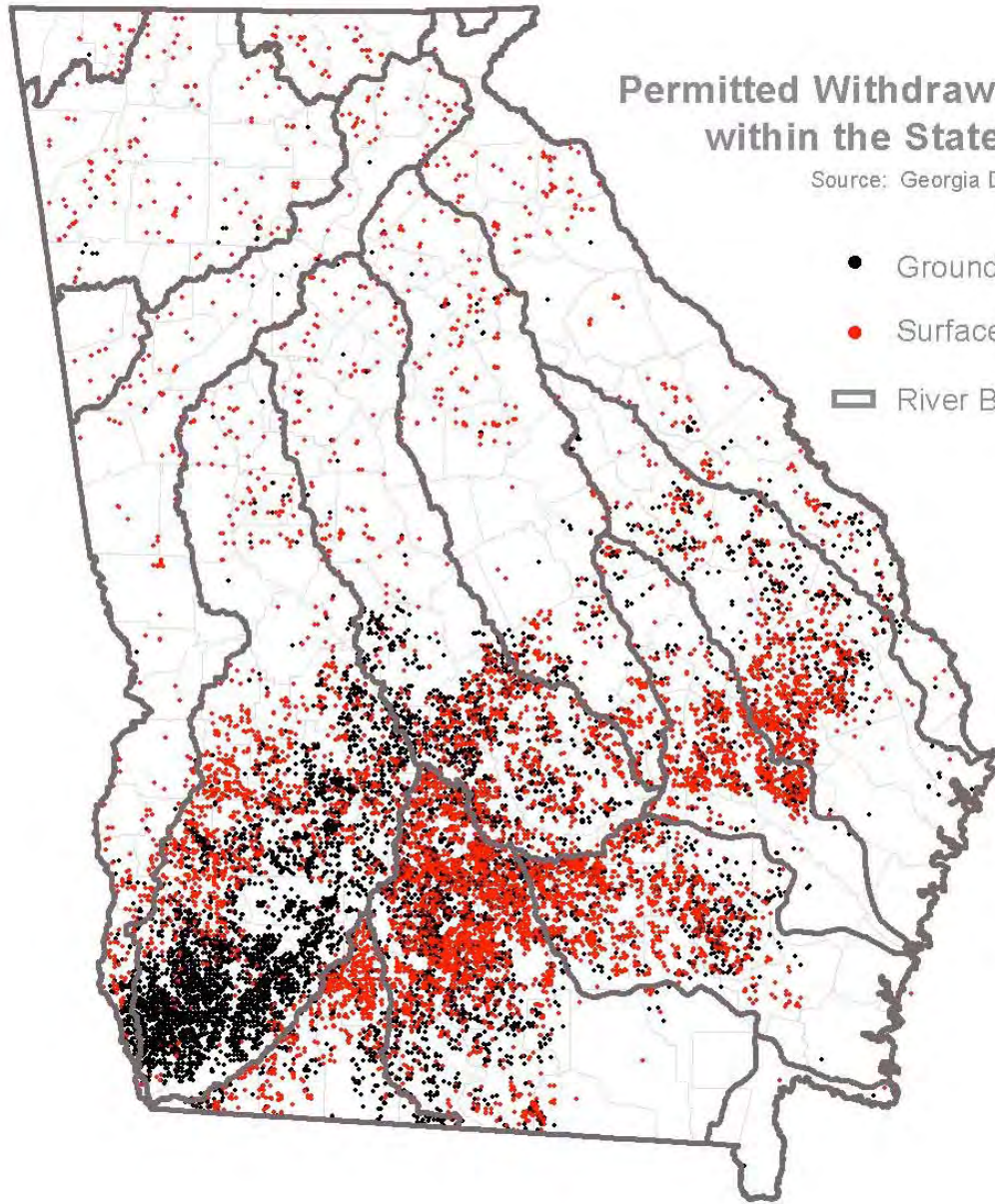
**Soil and Water Conservation Society
Tristate Conference**

May 17-19, 2007

**Doug Wilson
Georgia Water Planning & Policy Center**

Rationale

- High concentration of irrigated agriculture production in southwest Georgia



Permitted Withdrawals for Irrigation within the State of Georgia

Source: Georgia DNR EPD

- Groundwater Sources
- Surface Water Sources
- ▭ River Basins

Georgia Agricultural Water Permits

Rationale

- High concentration of irrigated agriculture production in southwest Georgia
- Drought conditions increased concerns about water quality and quantity from many fronts
 - Ecological
 - Municipal
 - “Water Wars”

**** Can Yoda save latest 'Star Wars'? / F1
TV judge gets giddy over fashion / F1



Bulldogs, Gators take the party to wine time / G1

Half empty



Copyright © 2002, The Atlanta Journal-Constitution

Sunny, 77°/49°, D16

SIDE TODAY

N. tightens sanctions against Iraq

U.N. Security Council approves an overhaul of sanctions against Iraq, speeding delivery of food and medicine while highlighting an 18-year-old military embargo. A3

Atlanta Braves league honors hot Castilla

Rockie's third baseman named player of week. Page 1B

Metro trolley Quebec goes public with offer today. Page 1B

By CHARLES SEABROOK
cseabrook@ajc.com

Sports liftout follows page 28A



Leaders tout trade summit

'Tremendous enthusiasm' builds for conference of 34 Western nations in Denver in June. Page 37A

Hyde Park jewelers strike plea deal. Page 38F

DENVER

Rocky Mountain News

TUESDAY

35¢ (50¢ in Designated Areas)

CHECK OUT THESE DOLLS

Local firefighters inspire new line of action figures

METRO, C1



Tough times at summer

BUS

METRO *****

Ebbing supply change life in Georgia

Food danger piling up



Water lawsuit socks farmers

Supreme Court rules against

STATE EDITION

reach fingers

Pee Dee River, other waterways in danger as N.C. mulls holding water

By CHUCK CRUMBO
Staff Writer

The Great Pee Dee River isn't the only stream in South Carolina in danger of drying up.

A state hydrologist said Friday seven streams already have reached 50-year lows as a severe drought enters its fifth year.

That revelation follows reports earlier this week that the Pee Dee could be reduced to a trickle if North Carolina officials are allowed to hold more water in upstream artificial lakes.

North Carolina also is in the grips of the drought. Water supplies are so tight that on Friday, N.C. Gov. Mike Easley asked the

use 25 percent a plan that reach into bathrooms.

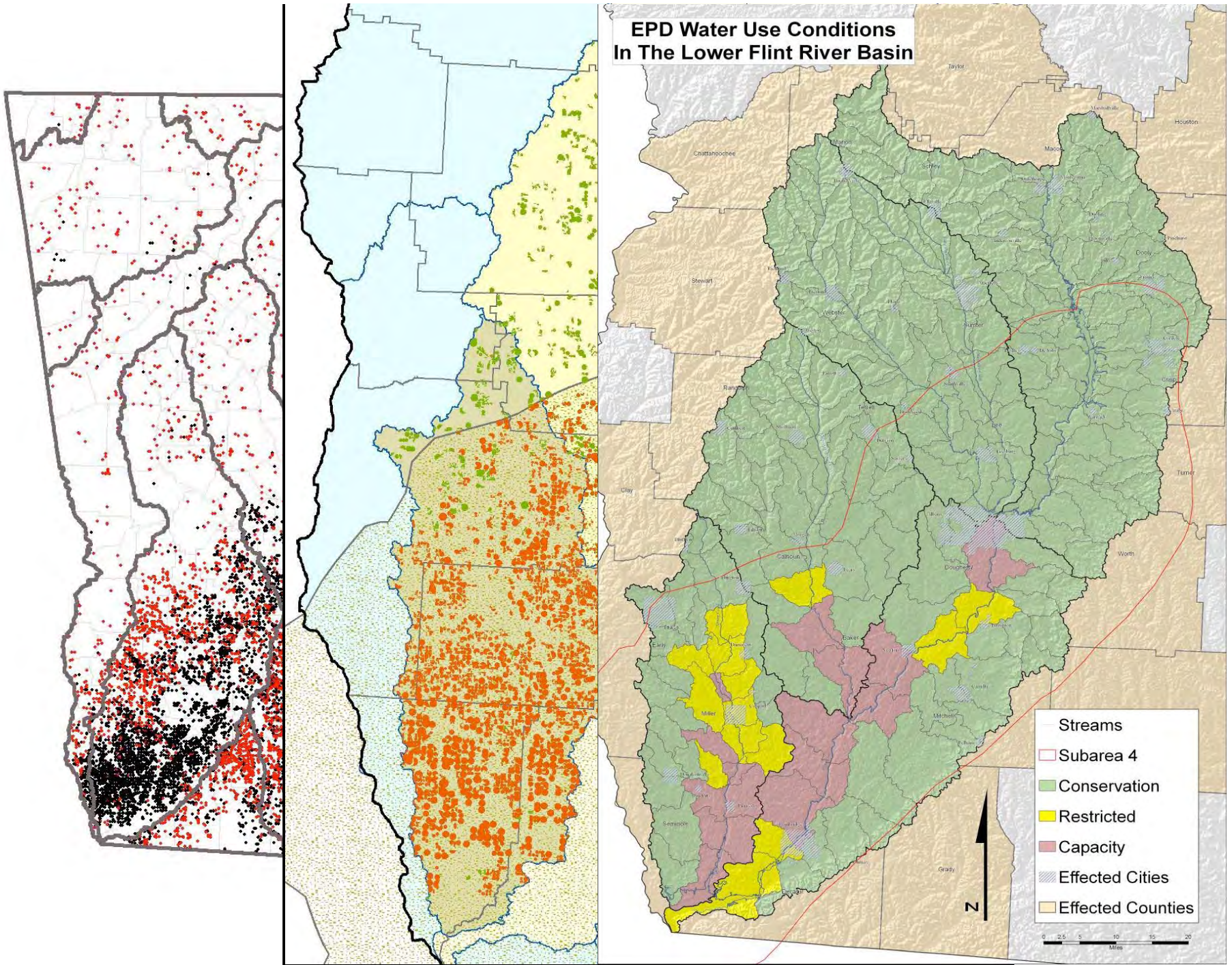
A newly landscaped median in Albuquerque, N.M., uses plants that don't require a lot of water.



PAUL BEARCE / Albuquerque Journal



EPD Water Use Conditions In The Lower Flint River Basin



Rationale

- High concentration of irrigated agriculture production in southwest Georgia
- Drought conditions increased concerns about water quality and quantity from many fronts
 - Ecological
 - Municipal
 - “Water Wars”
- **Legislation**
 - HB 237
 - HB 579

HB 237

Statewide Water Plan

“Georgia manages water resources in a sustainable manner to support the state’s economy, to protect public health and natural systems, and to enhance the quality of life for all citizens.”

Policy statement from the Comprehensive Statewide Water Management Planning Act signed by Governor Sonny Perdue on May 13, 2004.

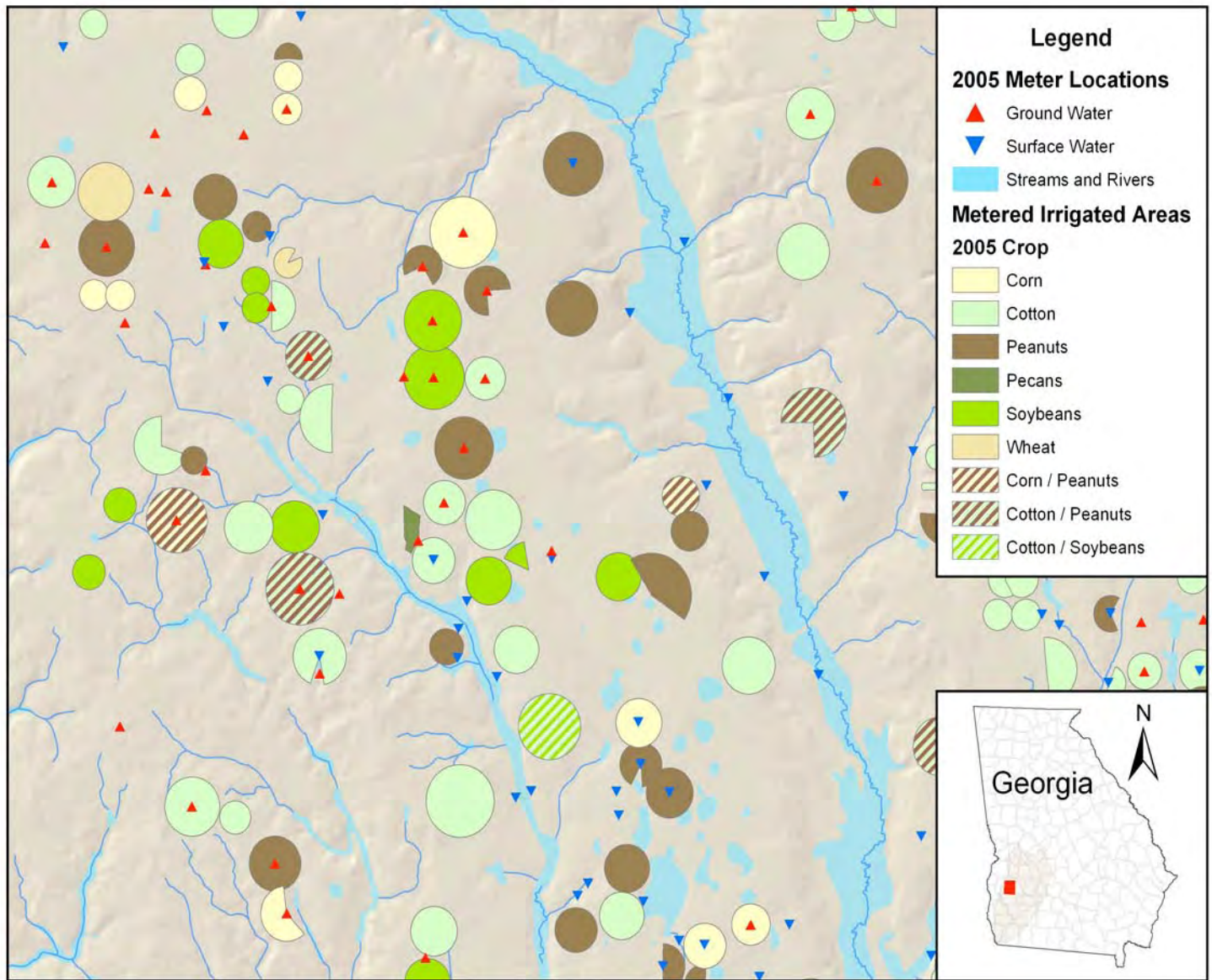
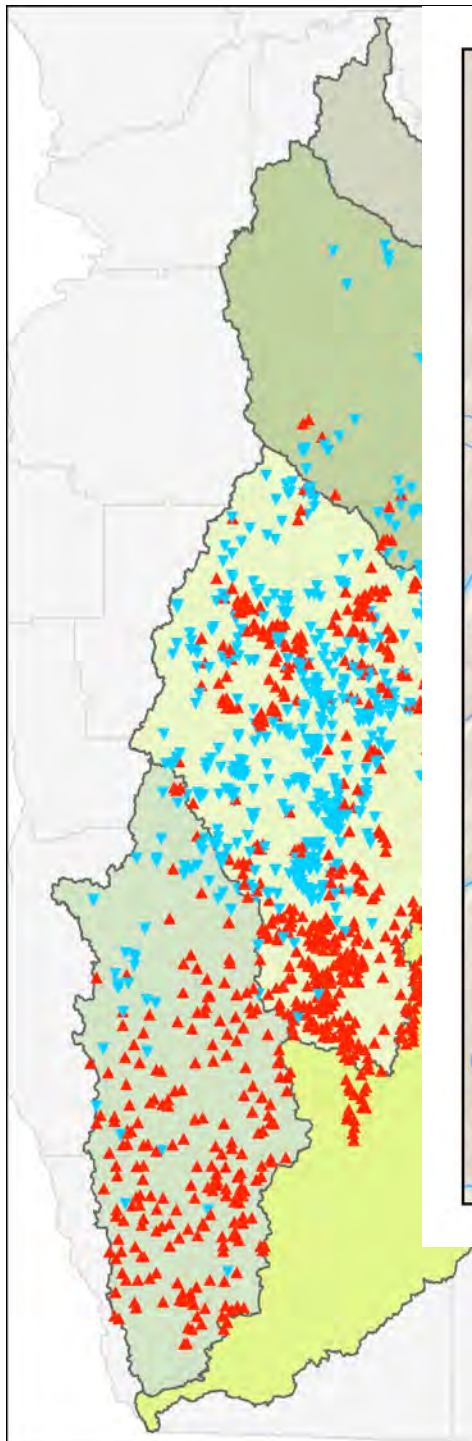
HB 579

Agricultural Metering

- Over 21,000 permits to be metered statewide
 - Estimated \$30 million investment by the state
 - Will near 28-30,000 actual meter locations due to multiple fields on same permit
 - All meters required to be read annually yielding an aggregate amount of water used

Structure

- Free, secure, web-based interface
- Incorporates latest available aerial imagery with multiple GIS data layers
- May be pre-loaded with existing data so long as a unique identifier is established
- Designed with dial-up users in mind
- Built for moderate traffic volume with capabilities of handling 30,000+ “field” entries over multiple years



Legend

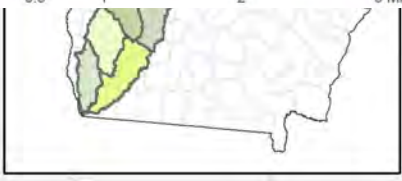
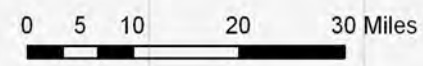
2005 Meter Locations

- ▲ Ground Water
- ▼ Surface Water
- Streams and Rivers

Metered Irrigated Areas

2005 Crop

- Corn
- Cotton
- Peanuts
- Pecans
- Soybeans
- Wheat
- Corn / Peanuts
- Cotton / Peanuts
- Cotton / Soybeans





Login Information

Please enter your User ID and password to access the Farmer Portal.

User ID:

Password:

Login

[Create a new user account](#)
[Forgot User ID or password?](#)

Issues in what has become known as the tri-state water wars, a dispute with neighboring Alabama and Florida over how to manage the Alabama-Coosa-Tallapoosa and the Apalachicola-Chattahoochee-Flint river basins.

Georgia Gov. Sonny Perdue and Alabama Gov. Bob Riley said Monday that they had decided to work out a compromise separately for the Alabama-Coosa-Tallapoosa basin, but



HOME | WEATHER | QUOTES | AG NEWS | DTN SOYBEAN RUST | PORTFOLIO | AGBIZDIR.COM

Quotes

Corn - CBT		
	Last	Chg
Dec	2484	6
Mar	2620	4
May	2694	6

Soybeans - CBT		
	Last	Chg
Nov	5510	-20
Jan	5636	-20
Mar	5754	-14

Wheat - CBT		
	Last	Chg
Dec	4076	122
Mar	4256	126

Ethanol - e-CBOT - CME		
	Last	Chg
Oct	2.07	0.00
Nov	2.18	0.00
Dec	2.22	0.00

Cotton - #2 - NYBOT		
	Last	Chg
Oct	5015	-96
Dec	5225	-123
Mar	5585	-145

All quotes are delayed snapshots
 Click here for info on Exchange delays

Ag Business Directory

The DTN **Ag Business Directory** specializes in listing and locating agriculturally-related businesses, helping connect you with companies, products, services, and information specific to your needs.

Start Searching the Agriculture Internet

Get Your Site Listed Today!

Georgia Farmer Portal Bulletin

DTN Top Stories

Wheat futures jumped higher in early trade, with Chicago up 11 1/2 cents. Corn and soybean futures were steady to firm. See DTN: Newsom's Quick Takes.

Cattle futures were lower and lean hogs were mostly higher in early trade. Cash hog prices are generally steady to \$.50 lower. Asking prices for cattle are around \$91 to \$92, with trade not expected before Thursday or later. See DTN Before the Bell Livestock Comments.

The U.S. and South Korea begin talks today aimed at setting a bone fragment tolerance level for U.S. shipments of beef. See DTN Ag News.

Australia's 2006/2007 wheat crop is expected to be 35 percent smaller than the previous year due to a serious lack of moisture. See DTN Ag News.

Trade officials from 18 ag nations

- the Cairns Group
- meet in Australia this week for their 20th anniversary meeting and talks are expected to center around jump-starting stalled WTO talks. See DTN Ag News.

My Market Watch

Click Here to **Customize**

Commodities

Corn (Dec 06)	2484	6	10:22A@	CBT
Soybeans (Nov 06)	5510	-20	10:20A@	CBT
Wheat (Dec 06)	4076	122	10:22A@	CBT
Oats (Dec 06)	2032	20	10:21A@	CBT

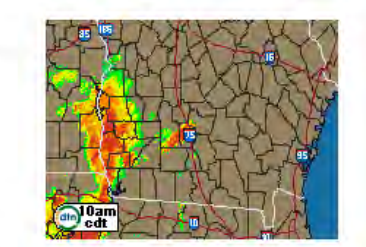
Stocks

MICROSOFT CORP	26.85	0.06	10:28A@	NASDAQ
WAL MART STORES	48.29	0.19	10:32A@	NYSE
YAHOO! INC				NASDAQ

Local Radar

Albany, GA

Chg Zip Code: **GO**



[View complete Local Weather](#)

Local Conditions

Albany, GA

Chg Zip Code: **GO**

Temp: **81°F** Feels Like: **87°F**
 Humid: **79%** Dew Pt: **74°F**
 Barom: **29.93** Wind Dir: **W**
 Cond: **Partly Cloudy** Wind Spd: **7 mph**
 Sunrise: **7:23** Sunset: **7:37**
 As reported at ALBANY, GA at 11:00 AM

[View complete Local Weather](#)

Local Forecast

Albany, GA

Change Zip: **GO**



Tuesday Wednesday Thursday
 Hi: **83°F** Hi: **81°F** Hi: **84°F**
 Lo: **73°F** Lo: **59°F** Lo: **53°F**

[View complete Local Weather](#)

☐☐☐ New User Registration

Follow these easy steps to create a User ID and save your irrigation report.

STEP 1. Create Your User ID

We recommend using something unique and easy to remember, like your e-mail address.

User ID:

STEP 2. Create Your Password

Make sure to use a password that you will remember! Must be between 6 and 12 characters.

Password:

Re-Enter Password:

STEP 3. Personal Information

If you forget your User ID or password, we will use this information to send you the account details.

E-mail Address:

First Name:

Last Name:

Company Name:

Address 1:

Address 2:

City:

State:

Zip Code:

Telephone:

Field 1

Field 2

Add Fields



General Field Information:

Field Alias:

Irrigation Acres: 60

Soil Texture: Loamy Sand

County: Calhoun

Basin: Ichawaynochaway

Source: SURFACE

Withdraw Type: STREAM

Source Flow: PERENNIAL

Legend: ▲ Meters ▲ Selected Meter ○ Claimed Fields ○ Selected Field ○ Unclaimed Fields

Hardware

Irrigation

Rainfall

Crops

Hardware Information:

Pump Type:

System install date?

Is the system towable?

Yes No

Did you tow the system this season?

Yes No

Hardware Type:

End Gun

End Gun Throw (feet)

Applied Conservation Measures:(check all that apply)

End Gun Shut Off Low Pressure Drop Variable Rate Other (Please Specify Below)

Hardware



Irrigation

Rainfall

Crops

Crop Data:

To enter detailed cropping information for this field, fill in the spaces to the left. You may enter Harvest Date and Yield at a later time. If a field has more than one crop, enter the information for the first crop and select the Add button. Repeat for any additional crops.

Crop Type:	<input type="text"/>
Irrigated Area: (Acres)	<input type="text"/>
Plant Date:	<input type="text"/> 
Harvest Date:	<input type="text"/> 
Seed Type:	<input type="text" value="DPL 455 BG/RR"/>
Tillage:	<input type="text"/>
Yield:	<input type="text"/>
Did you irrigate this crop?	<input type="radio"/> Yes <input checked="" type="radio"/> No
<input type="button" value="Add"/>	

Crop Year:

Crop Type: COTTON

Plant Date: 5/26/2006

Acres Planted: 60

Harvest Date:

Crop Irrigated: Yes

Seed Type: DPL 555 BG/RR

Irrigation: (Inches) 3.25

Tillage: Conventional

Rainfall: (Inches) 3.1

Yield: 0

☰ Report Options

Please Select a Region:

State Wide Basin County

Ichawaynochaway ▾

Please Select a Crop:

Cotton ▾

Please Select a Year:

2006 ▾

Please Select a Report Type:

Water Use ▾

Show Report

REPORT: WATERUSE (COTTON - 2006)

MY FIELDS: COTTON

BASIN ICHAWAYNOCHAWAY: COTTON

Acres	Average Yield	Average Rainfall (Inches)	Average Irrigation (Inches)	Total Irrigation (Acre-Inches)	Acres	Average Yield	Average Rainfall (Inches)	Average Irrigation (Inches)	Total Irrigation (Acre-Inches)
620	940	3.2	11.8	7316	60180	887	4.1	12.5	752250

Printer Friendly Report

So why the Portal©?

- New web-based system will provide significant added-value to the meter data
 - Provide a farm-level management tool
 - Capture the data behind the use (what, why, how)
 - Link use to farm-level, regional and state economies
 - Clearinghouse for info on conservation research, programs and ag water news
 - Can be easily adapted or incorporated
 - Because Georgia needs MORE information for meaningful water planning, not LESS
 - **Detailed background for “reasonable use”**

Reasonable Use???

- 9000 Ag Permit Holders
- 21,000 – 26,000 Permits
- Irrigating 1.5 million acres
- Private investment of more than \$1 billion
- Unlike Municipal & Industrial Permits Ag permits are NOT Quantified
- Management Options?????



Doug Wilson

Georgia Water Planning & Policy Center

dwilson@h2opolicycenter.org

229-430-2900

Mark H. Masters

ASU Flint River Water Policy Center

mmasters@h2opolicycenter.org

229-430-2900 x36