

Water Planning in Northwest Florida

Paul Thorpe

Northwest Florida Water Management District

May 18, 2007

Northwest Florida Water Management District
81 Water Management Drive
Havana, FL 32333
(850) 539-5999
Paul.Thorpe@nwfwm.d.state.fl.us

<http://www.nwfwm.d.state.fl.us/>



Water Supply Planning Regions



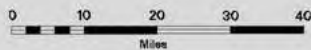
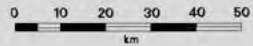
Northwest Florida Water Management District
Water Supply Planning Regions



Primary Water Supply
Planning Region

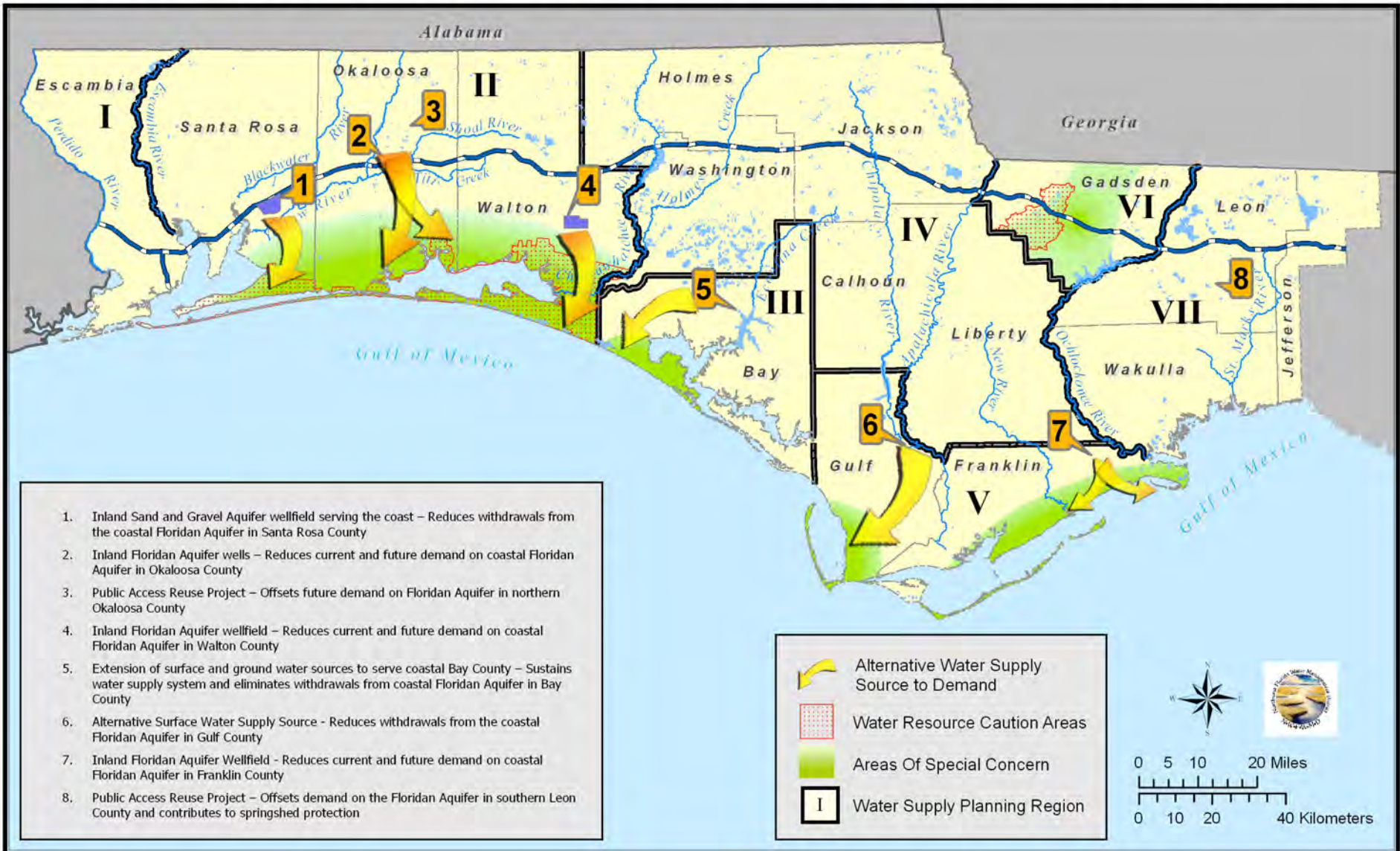


Areas of Special Concern







Water Use Category	Water Use 2000 Mgal/d	Percent of Total	Water Use 2025 Mgal/d	Percent of Total	Increase 2000-2025 Mgal/d	Percent Increase
Public Supply	166.16	53%	255.01	58%	88.85	53%
Domestic/Small Public Self Supply	21.63	7%	28.86	7%	7.23	33%
Commercial-Industrial Self Supply	76.28	24%	99.10	22%	22.82	30%
Recreational Irrigation	12.06	4%	16.40	4%	4.34	36%
Agricultural Irrigation	30.10	10%	36.55	8%	6.45	21%
Power Generation	5.65	2%	7.42	2%	1.77	31%
Total	311.88	100%	443.34	100%	131.46	42%

Water Supply Planning Regions and Alternative Water Supplies

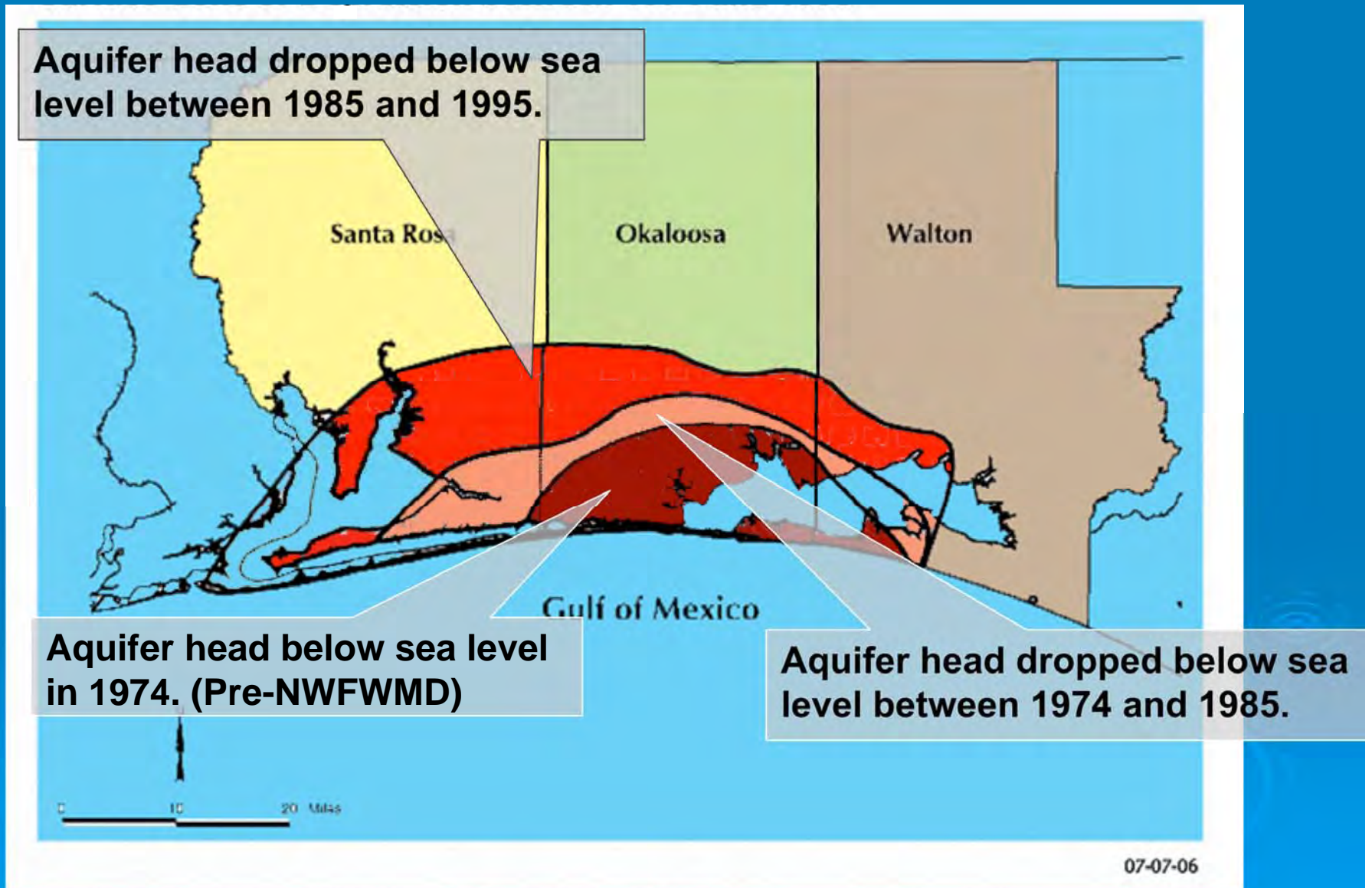


1. Inland Sand and Gravel Aquifer wellfield serving the coast – Reduces withdrawals from the coastal Floridan Aquifer in Santa Rosa County
2. Inland Floridan Aquifer wells – Reduces current and future demand on coastal Floridan Aquifer in Okaloosa County
3. Public Access Reuse Project – Offsets future demand on Floridan Aquifer in northern Okaloosa County
4. Inland Floridan Aquifer wellfield – Reduces current and future demand on coastal Floridan Aquifer in Walton County
5. Extension of surface and ground water sources to serve coastal Bay County – Sustains water supply system and eliminates withdrawals from coastal Floridan Aquifer in Bay County
6. Alternative Surface Water Supply Source - Reduces withdrawals from the coastal Floridan Aquifer in Gulf County
7. Inland Floridan Aquifer Wellfield - Reduces current and future demand on coastal Floridan Aquifer in Franklin County
8. Public Access Reuse Project – Offsets demand on the Floridan Aquifer in southern Leon County and contributes to springshed protection

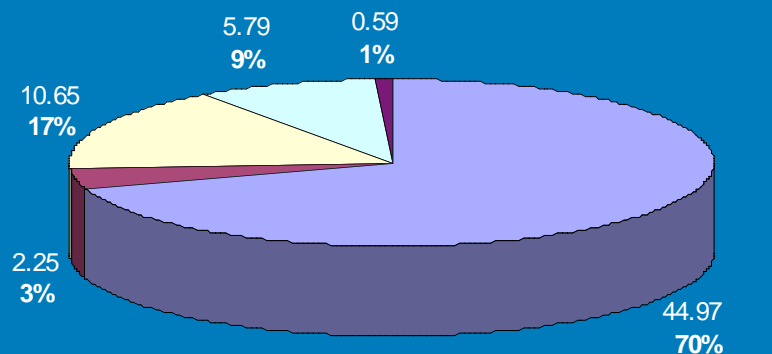
 Alternative Water Supply Source to Demand
 Water Resource Caution Areas
 Areas Of Special Concern
 Water Supply Planning Region



Region II: Santa Rosa, Okaloosa, & Walton Counties

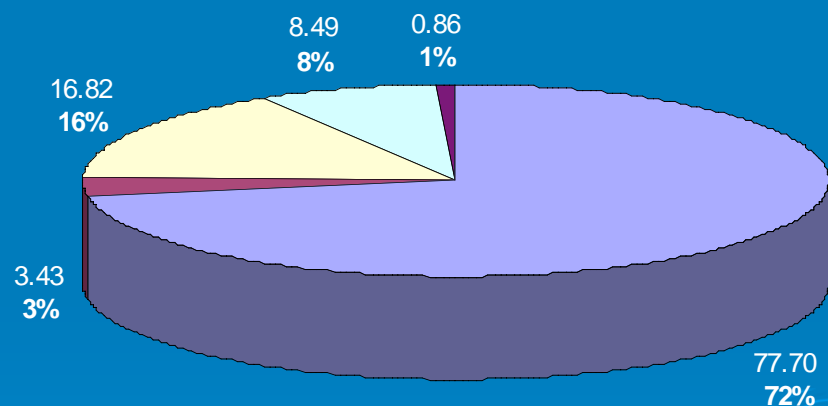


Region II: 2000 Average Water Use (Mgal/d)



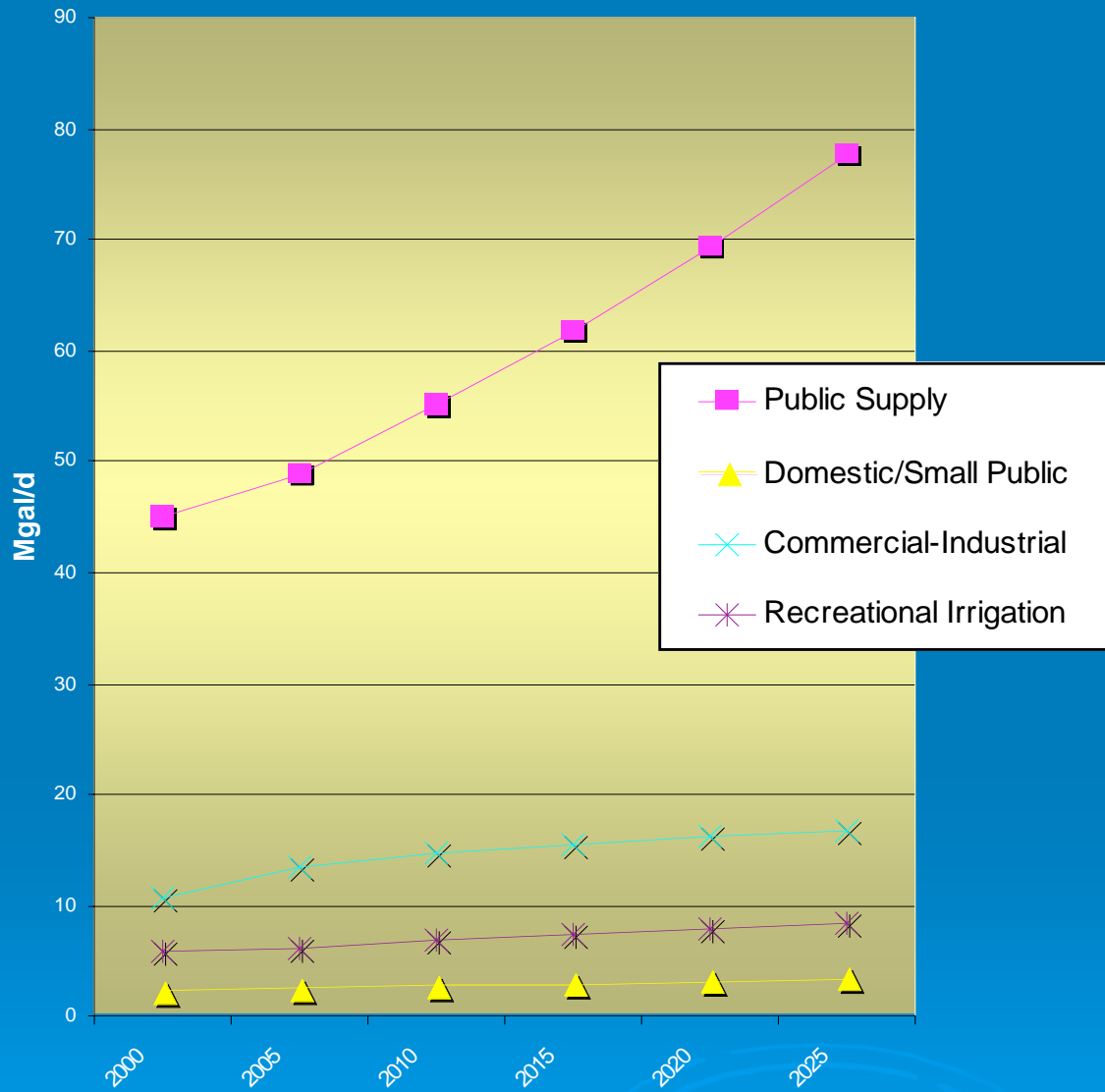
- Public Supply
- Domestic Self-supply and Small Public Supply Systems
- Commercial-Industrial Self-supply
- Recreational Irrigation
- Agricultural Irrigation

Region II: 2025 Projected Average Water Use (Mgal/d)

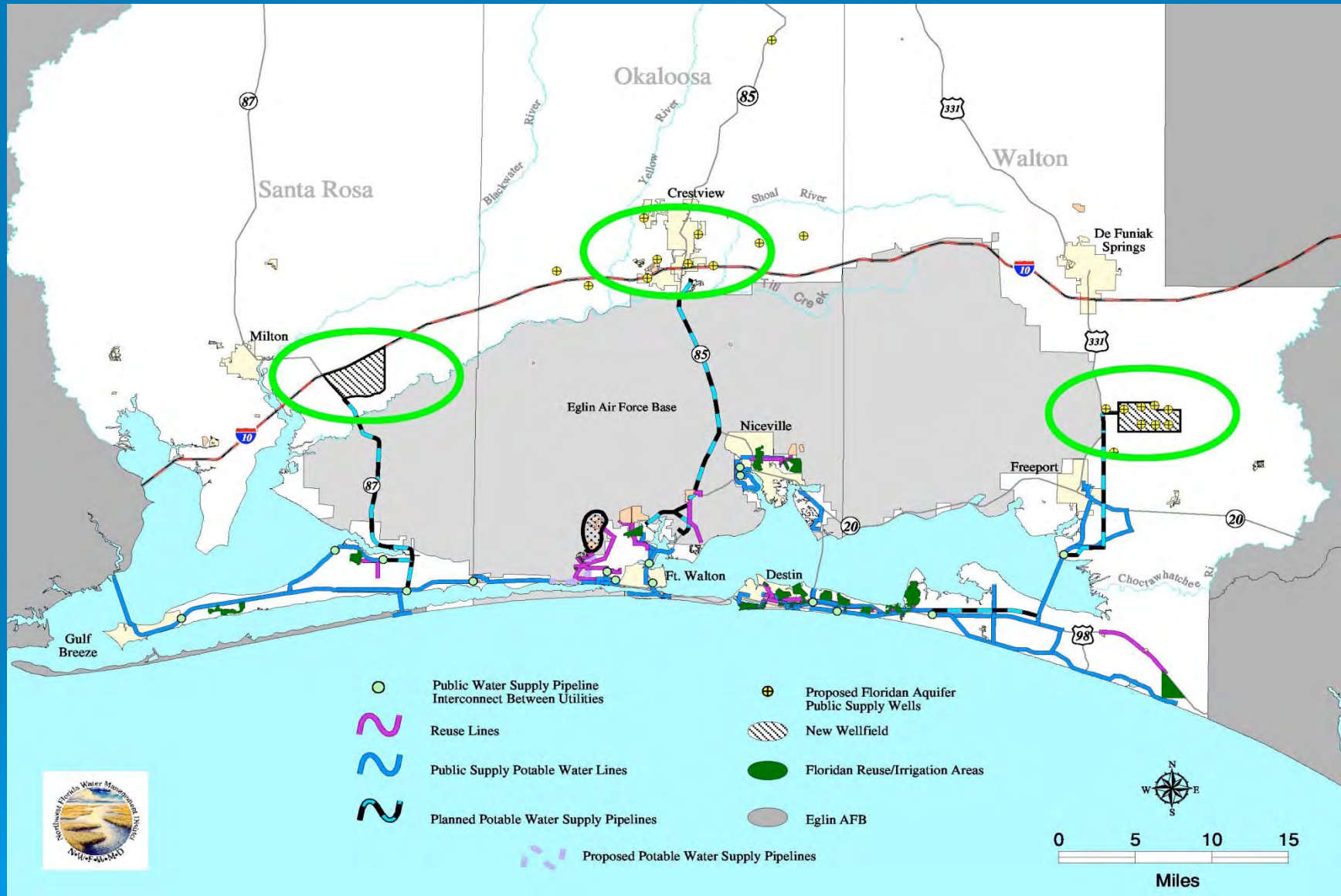


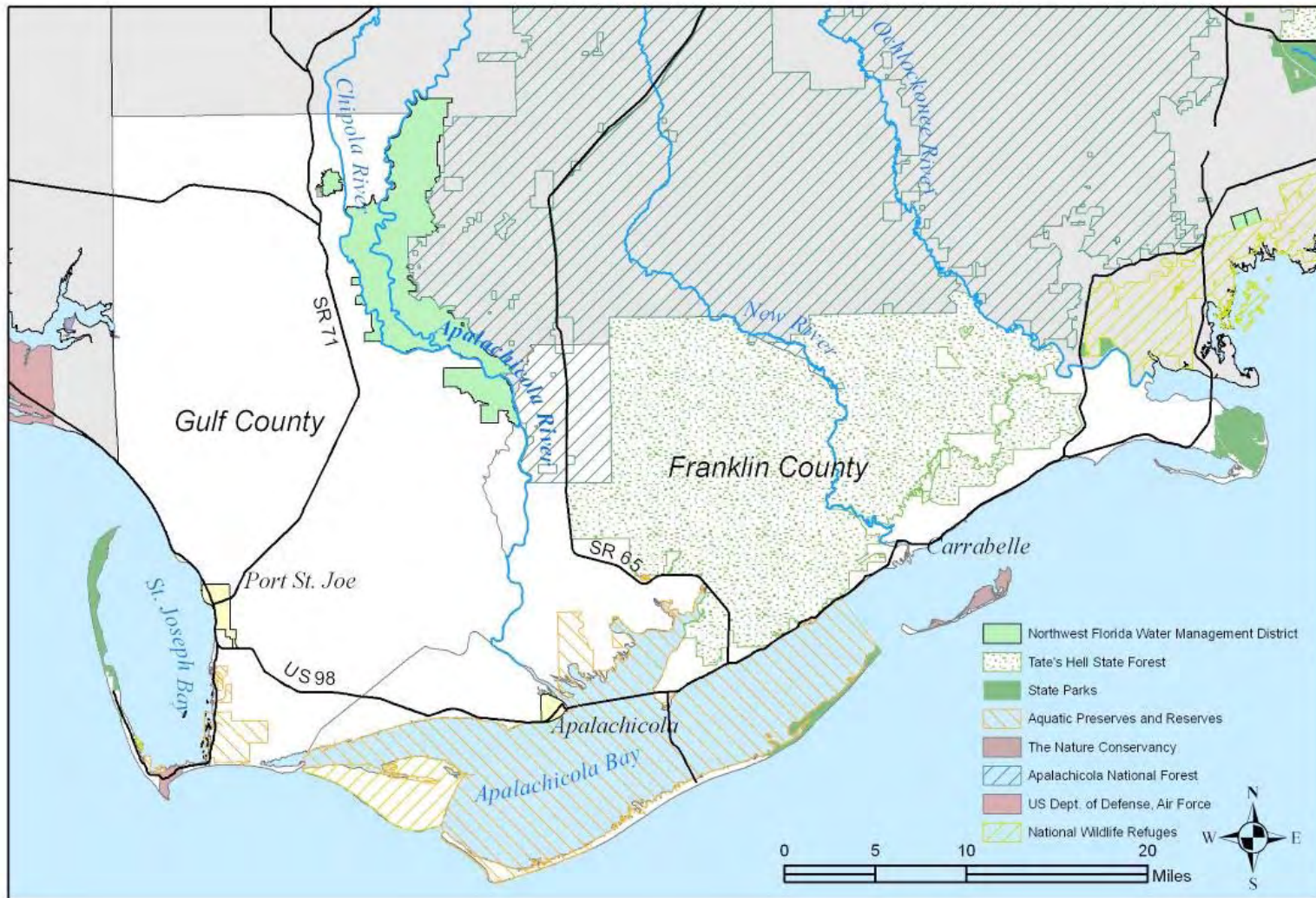
- Public Supply
- Domestic Self-supply and Small Public Supply Systems
- Commercial-Industrial Self-supply
- Recreational Irrigation
- Agricultural Irrigation

Region II: 2000-2025 Water Use by Category



Alternative Water Supplies in Region II

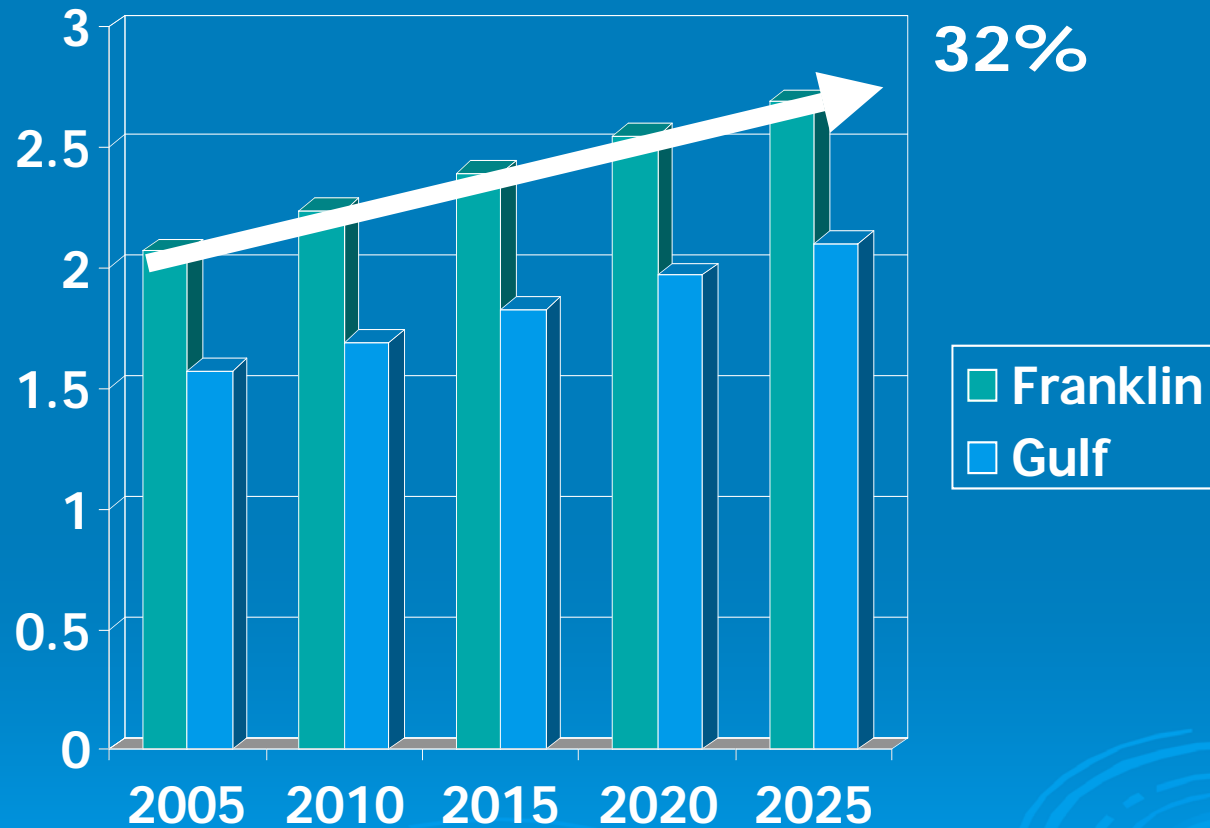




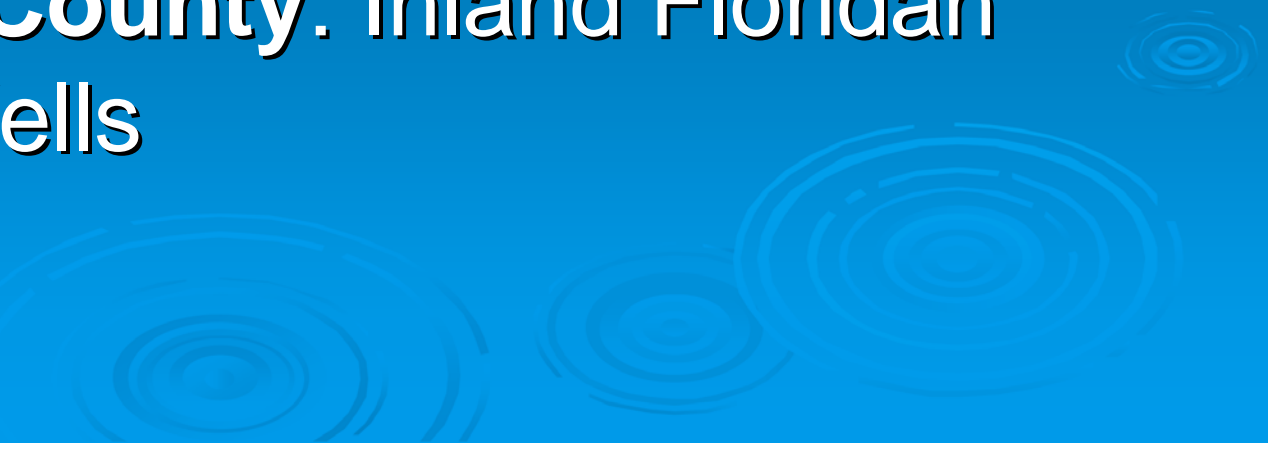
Region V: Gulf and Franklin Counties

Public Supply Demand Projections 2005 – 2025

In Mgal/d



Preferred Alternative Water Sources for Region V

- **Gulf County:** Surface Water via the Gulf County Fresh Water Supply Canal
 - **Franklin County:** Inland Floridan Aquifer Wells
- 

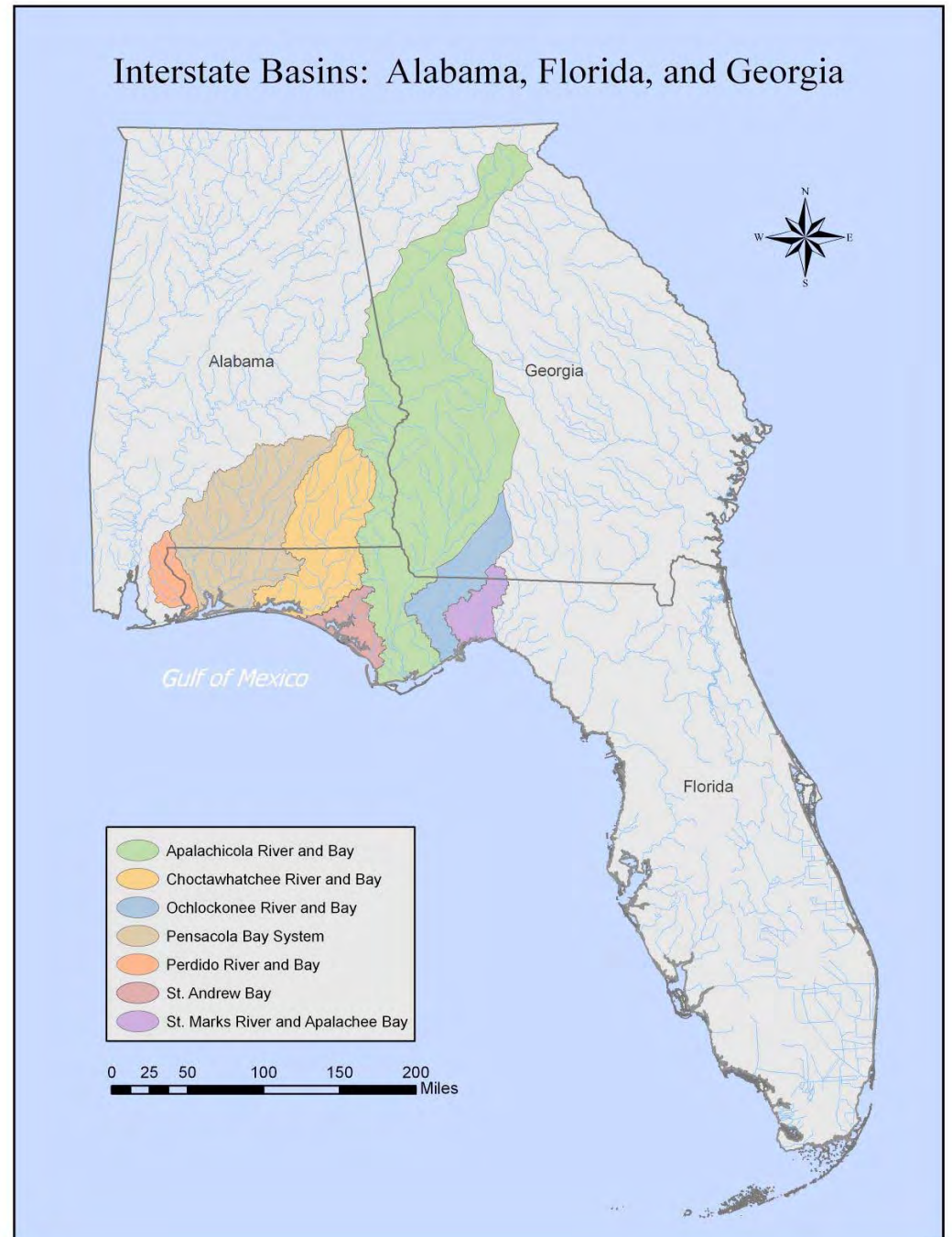
Water Protection and Sustainability Program

- Sections 403.890 & 373.1961, Florida Statutes
- State funding assistance for cooperative alternative water supply development assistance projects
- Additional financial assistance available for financially disadvantaged small local governments

Alternative Water Supplies Defined (s. 373.019(1), F.S.)

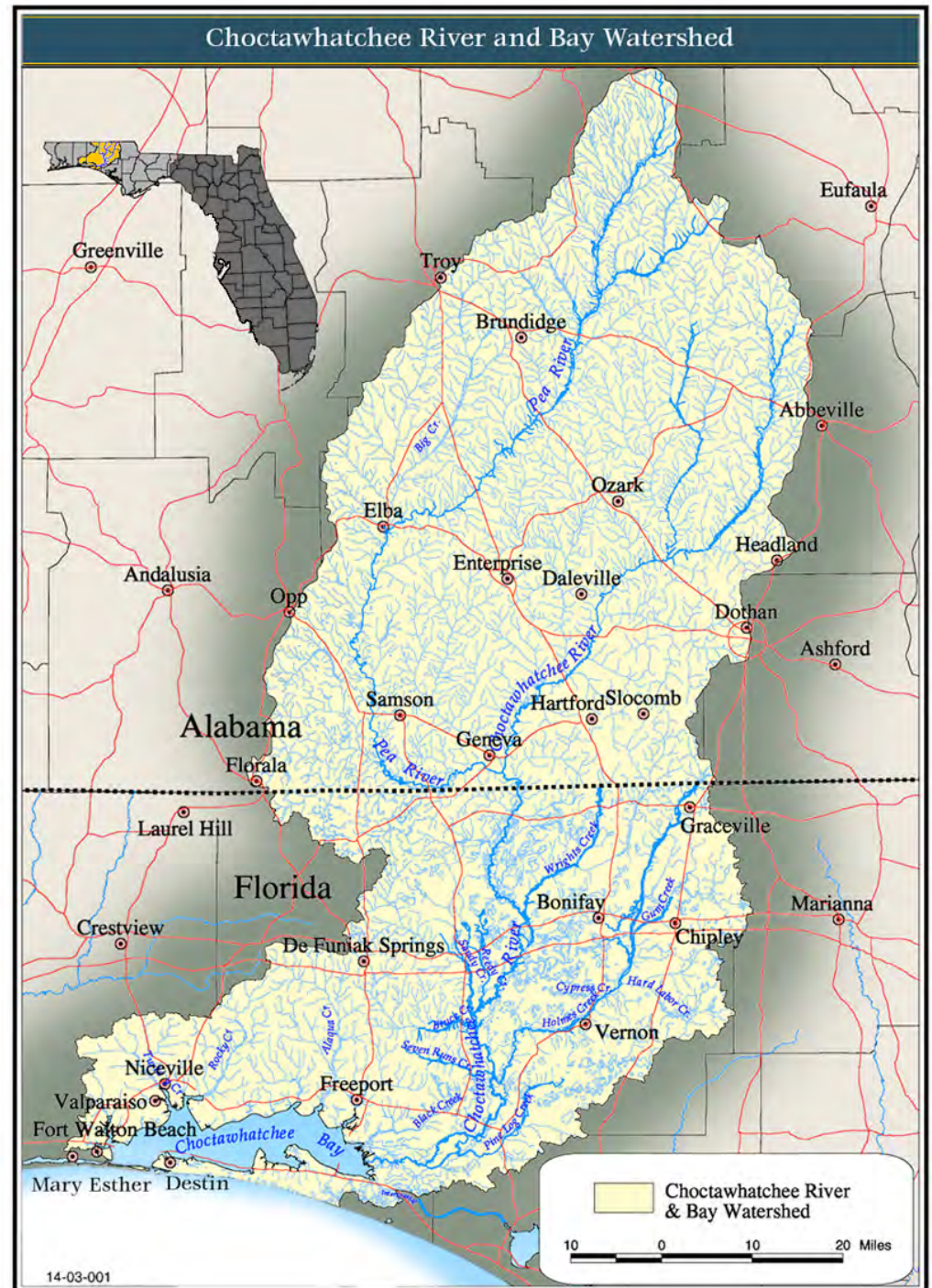
- Salt Water
- Brackish Surface And Ground Water
- Surface Water Captured Predominantly During Wet Weather Flows
- Sources Made Available Through Addition Of New Storage Capacity For Surface Or Groundwater
- Reclaimed Water
- Downstream Augmentation of Waterbodies With Reclaimed Water
- Stormwater
- Any Other Water Supply Source Designated As Nontraditional In The Applicable Regional Water Supply Plan

Northwest Florida Watersheds



SWIM Program

- Surface Water Improvement & Management Act passed in 1987.
- Provides for development and implementation of watershed-based plans.
- Implementation includes cooperative restoration projects, as well as supporting analyses and assessments.



NWFWMD SWIM Priority List

Apalachicola River and Bay Watershed

Pensacola Bay Watershed

Choctawhatchee River and Bay Watershed

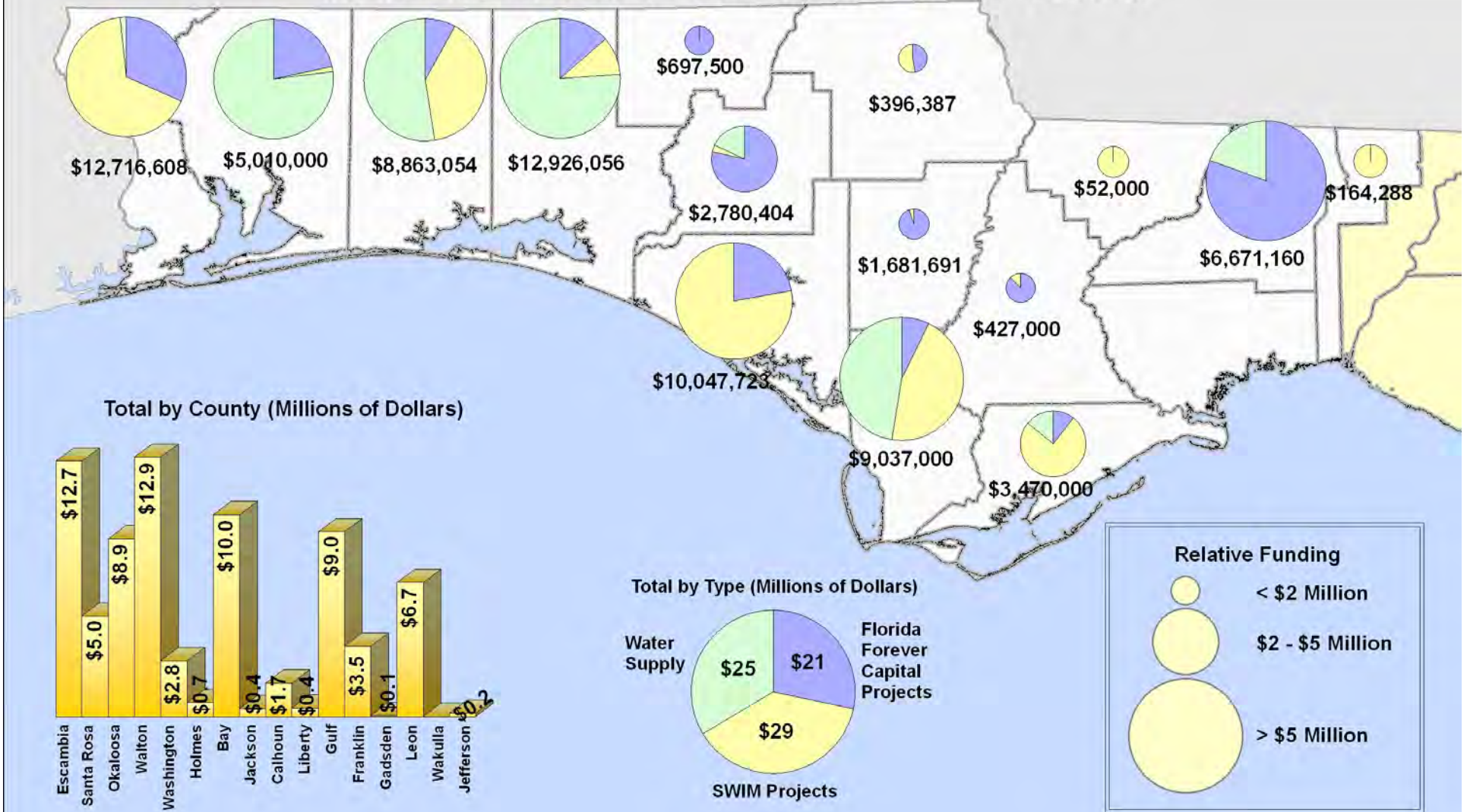
St. Andrew Bay Watershed

St. Marks River and Apalachee Bay Watershed

Ochlockonee River and Bay Watershed

Perdido River and Bay Watershed

NFWFMD Project Funding by County and Project Type (FY 2001-2007)



Cooperative Project Funding by County and Type – 2001-2007

NORTHWEST FLORIDA WATER MANAGEMENT DISTRICT LANDS



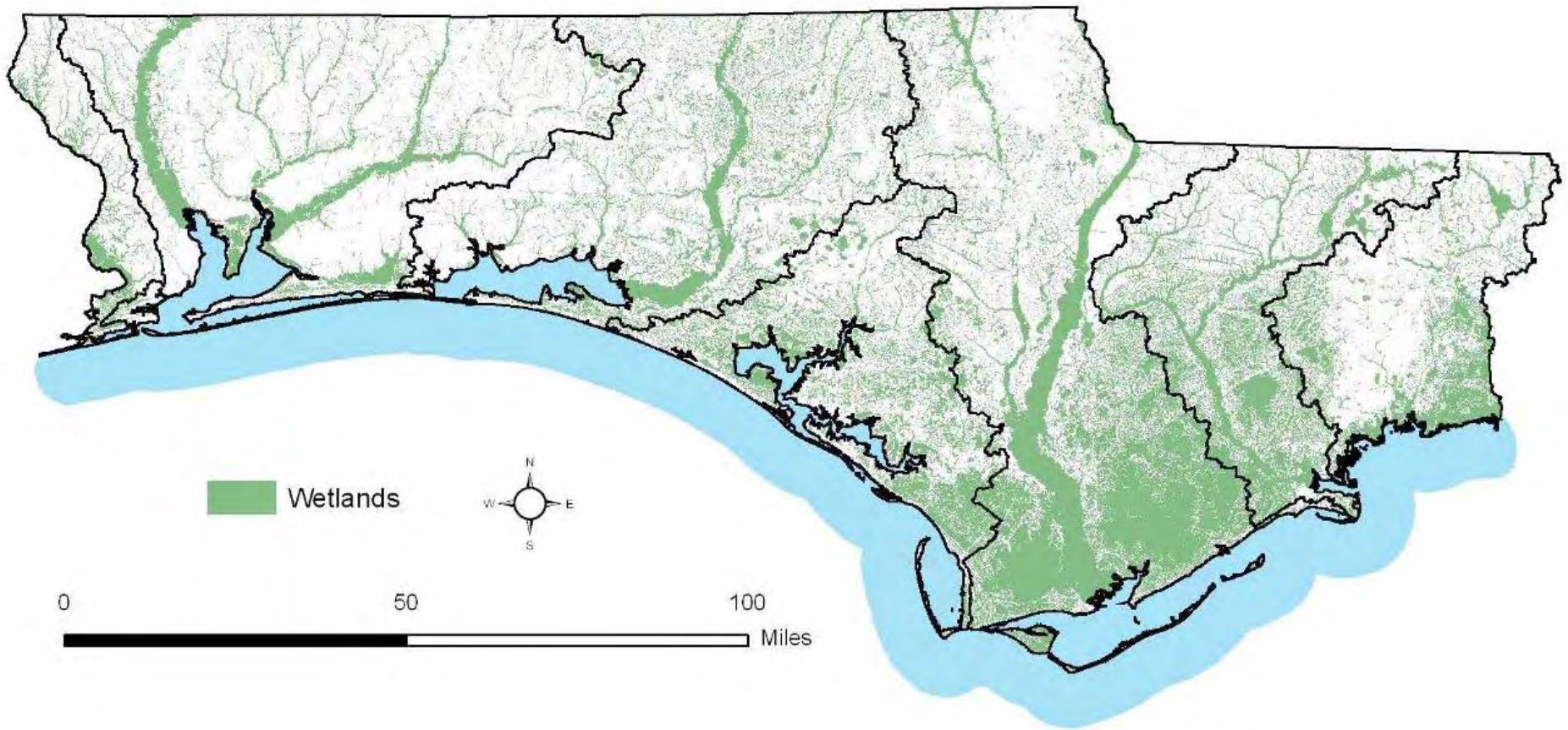
Land Acquisition & Management

Watershed	Acres - Fee	Less than Fee	Total Area (acres)
St. Marks River and Apalachee Bay	0	1,032	1,032
Ochlockonee River and Bay	516	312	828
Apalachicola River and Bay	42,883	816	43,699
St. Andrew Bay	41,135	2,433	43,568
Choctawhatchee River and Bay	60,595	1,444	62,039
Pensacola Bay System	56,269	19	56,288
Total	206,854	6,056	212,910

Regional Wetland Mitigation

1996 - 2007





Northwest Florida Major Wetland Systems

Environmental Resource Permitting



tamtech
Pool & Spa
650-3747



Northwest Florida Water Management District



For More Information:

Ron Bartel (Resource Management)
Ron.Bartel@nfwfmd.state.fl.us

Bill Cleckley (Land Acquisition and Mgt)
Bill.Cleckley@nfwfmd.state.fl.us

Guy Gowens (Resource Regulation)
Guy.Gowens@nfwfmd.state.fl.us

Angela Chellete (Consumptive Use Permitting)
Angela.Chellete@nfwfmd.state.fl.us

Duncan Cairns (Regional Mitigation)
Duncan.Cairns@nfwfmd.state.fl.us

Lee Marchman (Env. Resource Permitting)
Lee.Marchman@nfwfmd.state.fl.us

Paul Thorpe (Planning)
Paul.Thorpe@nfwfmd.state.fl.us

(850) 539-5999 <http://www.nfwfmd.state.fl.us/>